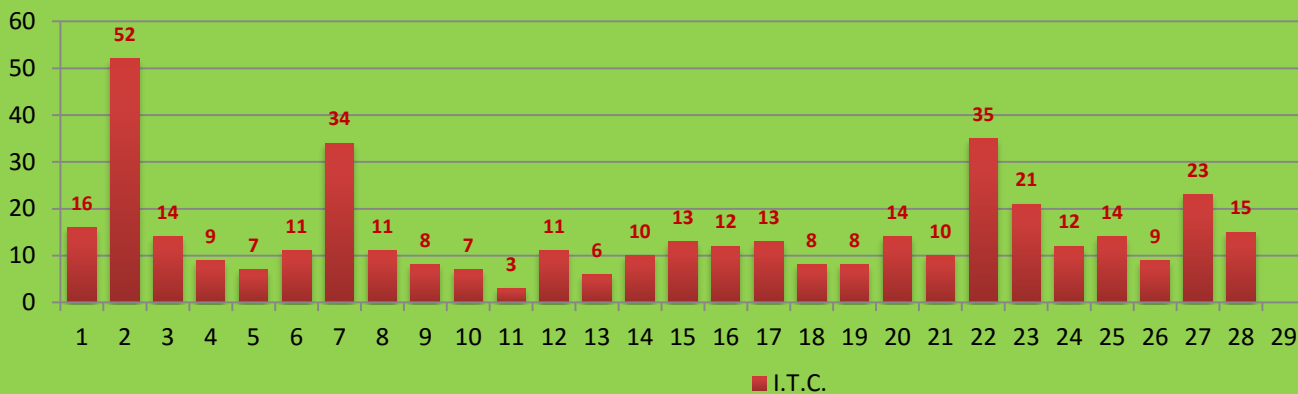


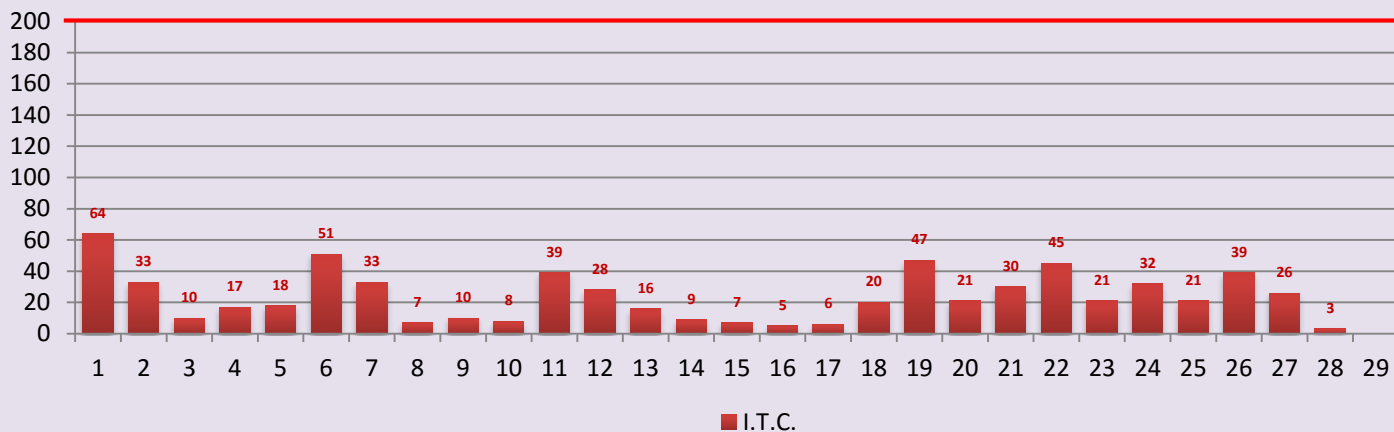


MONITORAGGIO INQUINAMENTO DELL'ARIA RELATIVO A FEBBRAIO 2016

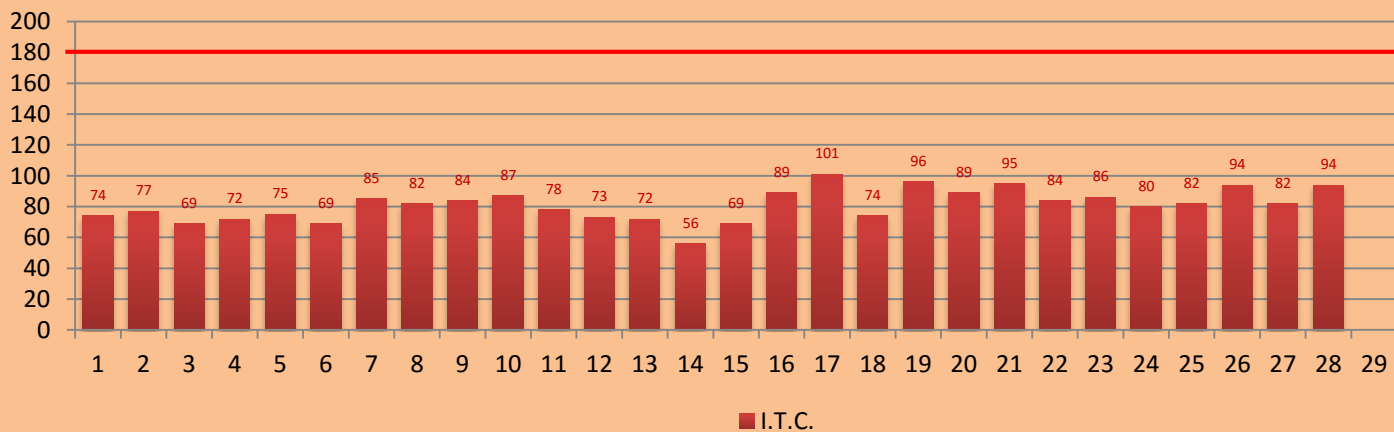
PM2.5 - Valore limite 25 $\mu\text{g}/\text{m}^3$ (media annua)

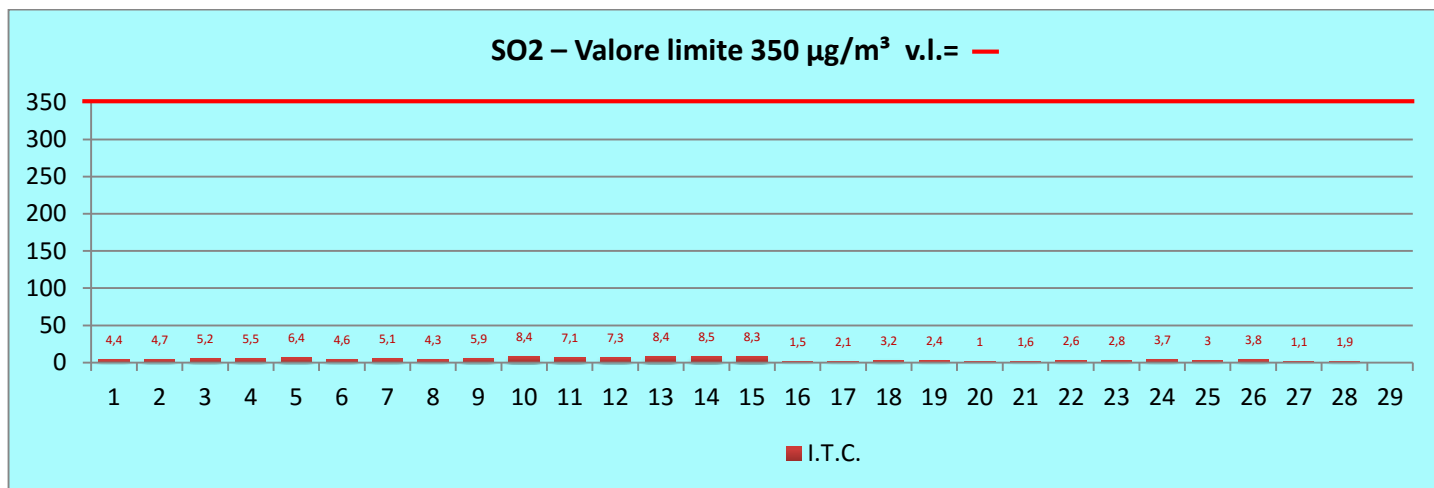
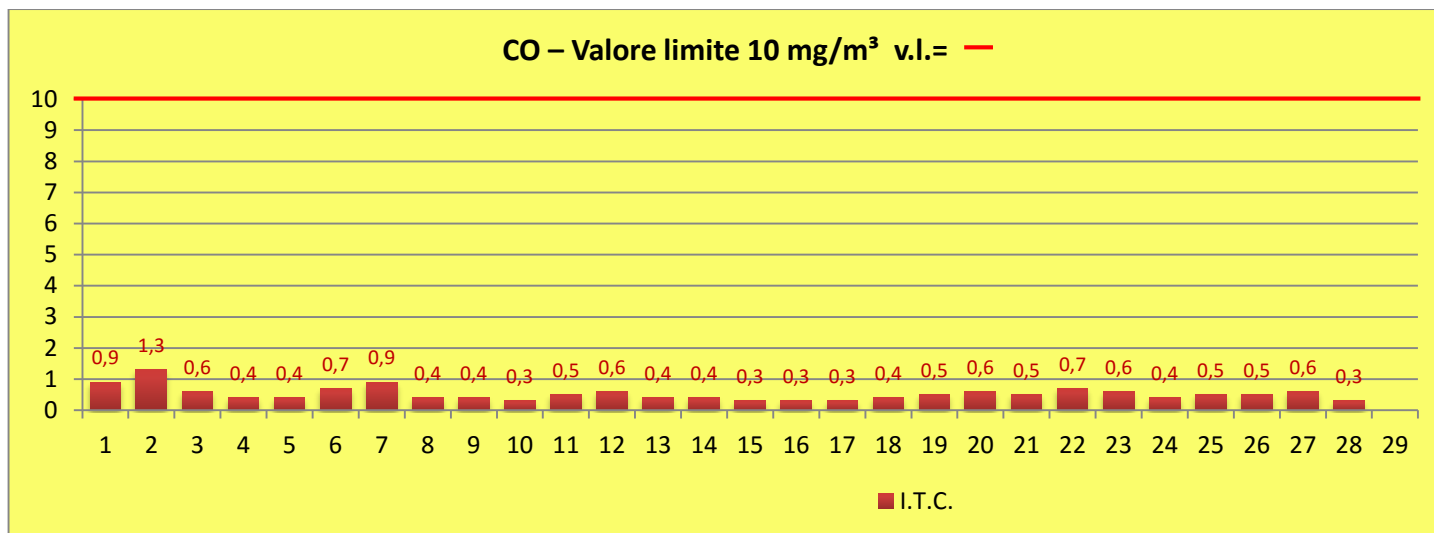


NO2 - Valore limite 200 $\mu\text{g}/\text{m}^3$ v.l.= —



O3 - Valore limite 180 $\mu\text{g}/\text{m}^3$ v.l.= —





Fonte: <http://www.arpa.puglia.it/web/guest/qariainq>