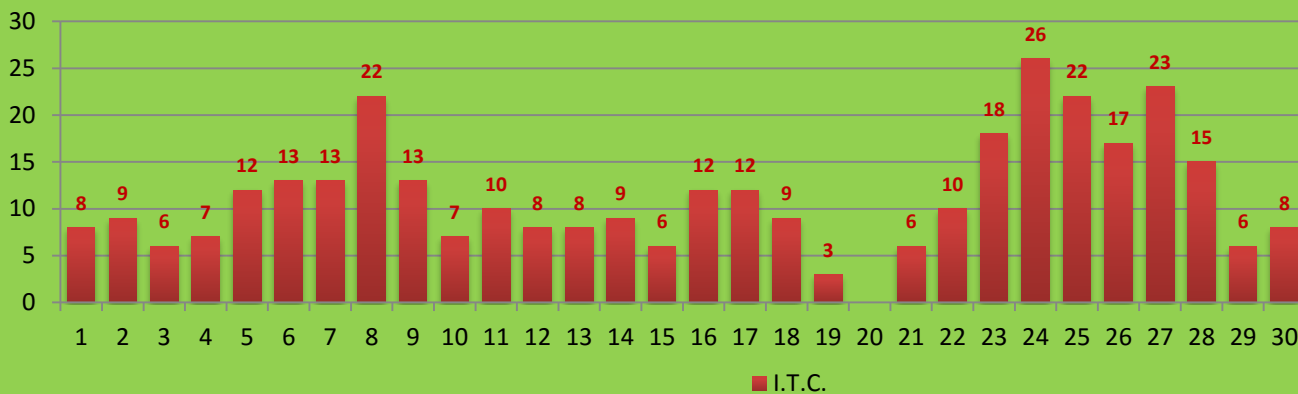


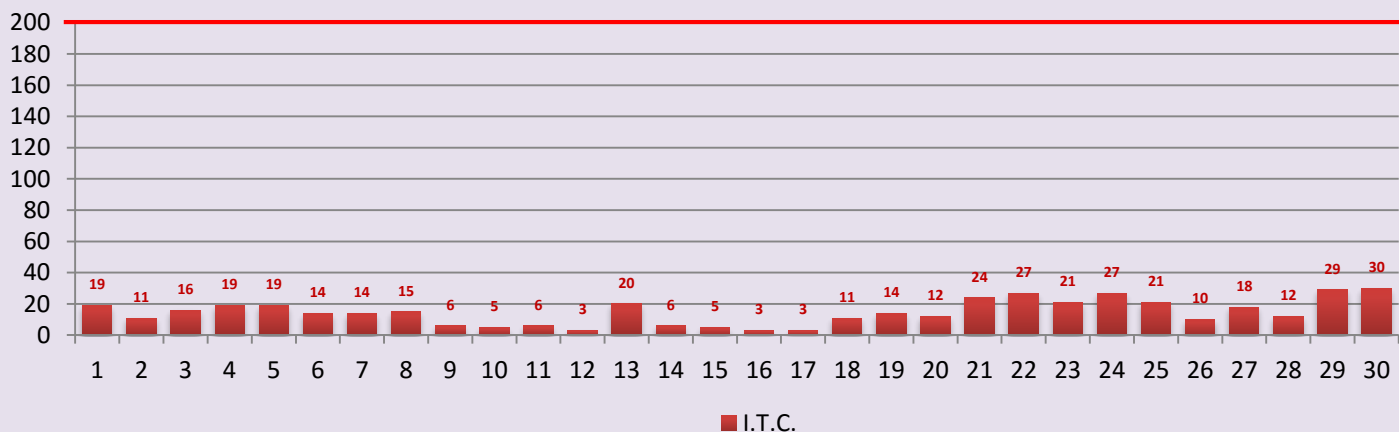


## MONITORAGGIO INQUINAMENTO DELL'ARIA RELATIVO A GIUGNO 2016

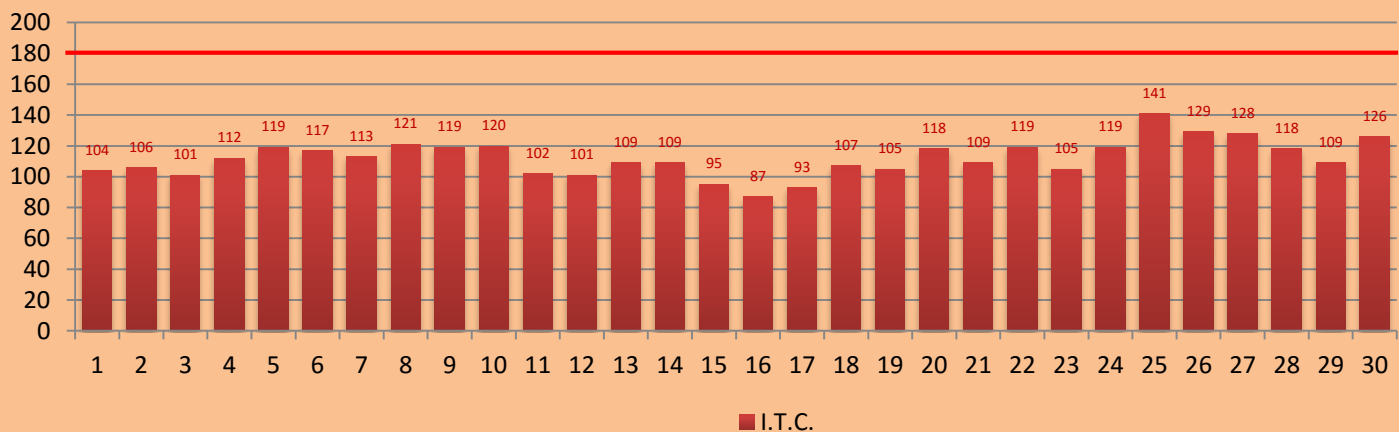
### PM2.5 - Valore limite 25 $\mu\text{g}/\text{m}^3$ (media annua)

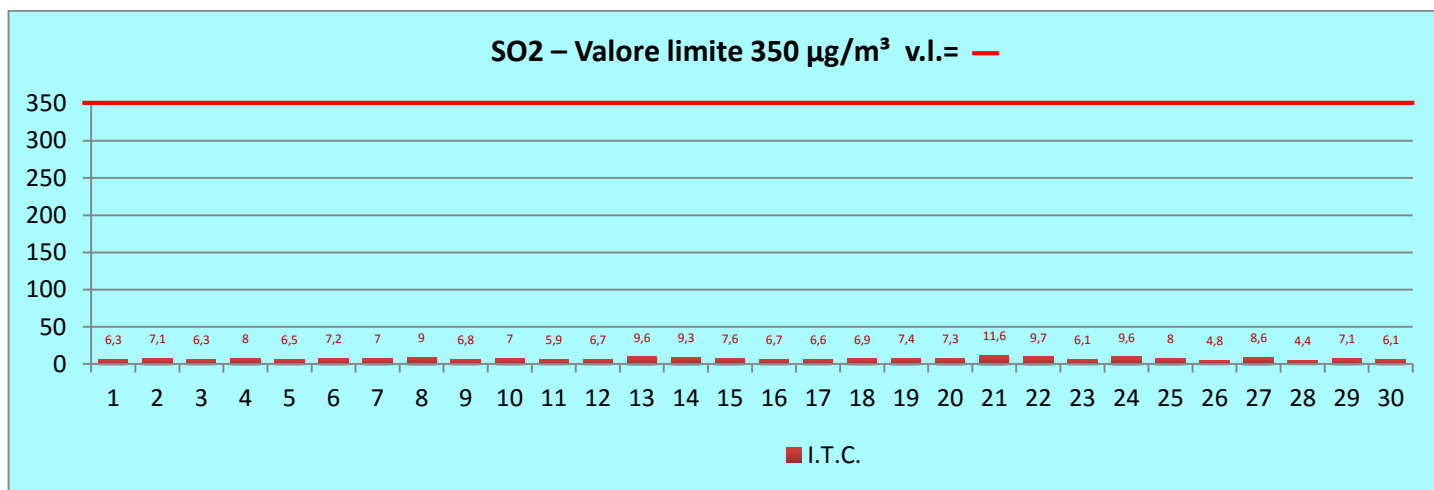
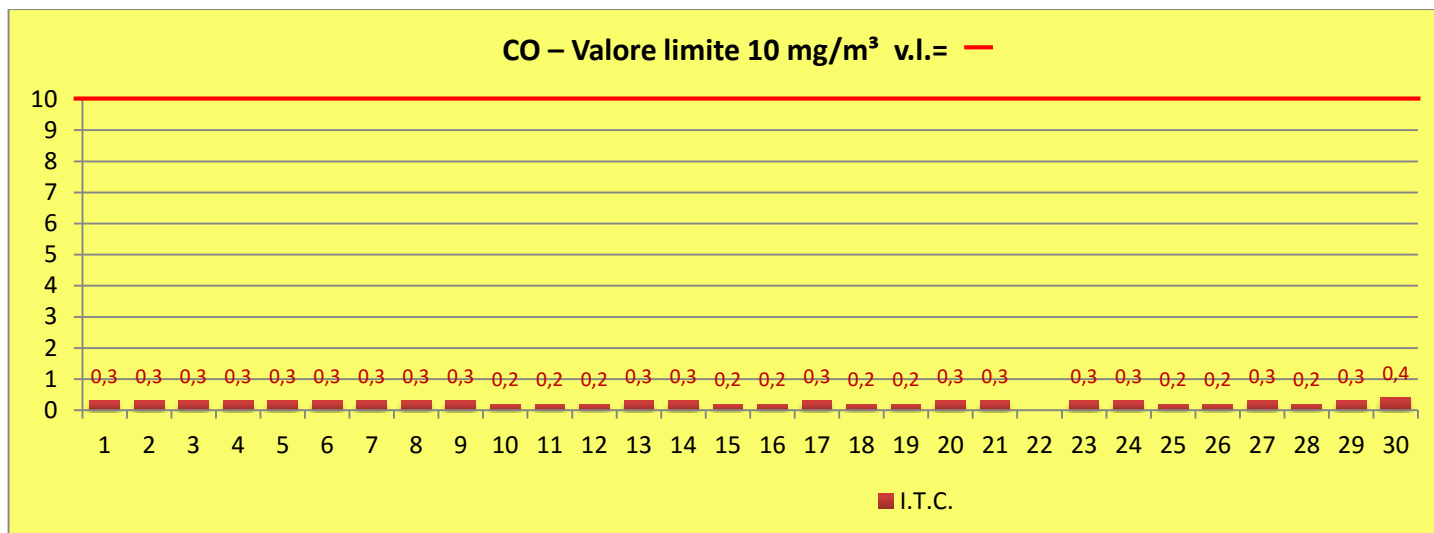


### NO2 - Valore limite 200 $\mu\text{g}/\text{m}^3$ v.l.= —



### O3 - Valore limite 180 $\mu\text{g}/\text{m}^3$ v.l.= —





Fonte: <http://www.arpa.puglia.it/web/guest/qariainq>